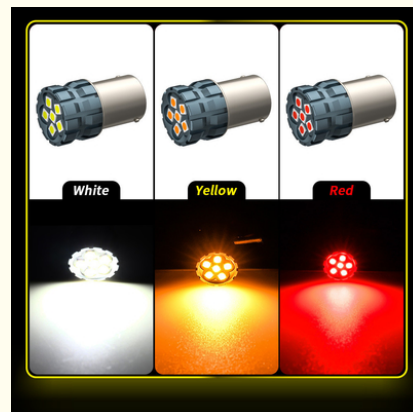




## 100% Canbus Bau15S Ba15S T25 1156 LED Bulb 900Lm 3030 Chips 6LED 12V Brake Turn Signal Lights 6W

### Basic Information

- Place of Origin: China
- Brand Name: Dalilah
- Certification: ce
- Model Number: 1156/1157-3030-6SMD
- Minimum Order Quantity: 100 pieces
- Price: USD2.0~3.0/ PC
- Packaging Details: 2pc/bag. 2X2X2 cm;0.040 kg;
- Delivery Time: 30 days
- Payment Terms: T/T, Western Union
- Supply Ability: 10000 Piece per Month

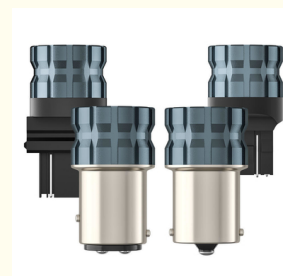


### Product Specification

- Oe No: 1157/7443/3157
- Item No: 1156/1157-3030-6SMD
- Power: 6W
- Voltage: 12V
- Lifespan: 50,000 Hours
- Car Fitment: ABG, Abarth
- Package Includes: 2 LED Brake Turn Signal Lights
- Application Temp: -40°C~+85°C
- Lamp Type: 3030-6SMD
- Compatibility: Universal
- Lighting Angle: 360 Degree
- Color: White/Red
- Color Temperature: 6500K White



### More Images



## Product Description

### Product Description:

Illuminate your vehicle's presence on the road with the state-of-the-art LED Brake Turn Signal Lights, tailored to enhance your driving safety and vehicle functionality. Meticulously designed to serve a dual purpose, these lights are the quintessential LED Brake and Turn Signal Combination, providing a clear and unmistakable signal to other road users during various maneuvers. Whether you're coming to a halt or making a turn, these lights ensure that your intentions are clearly communicated, thus reducing the risk of accidents and enhancing road safety.

Our LED Stop and Turning Lights are equipped with cutting-edge LED technology that casts a bright and powerful light, outshining traditional incandescent bulbs in both intensity and reliability. LEDs are known for their quick illumination, and these lights are no exception, lighting up instantaneously to alert trailing motorists with ample time to react. This promptness is critical, especially in emergency braking scenarios, where every millisecond counts.

Fitting universally across a wide range of car models, these versatile LED Stop Turn Tail Lights are designed to be adaptable and easy to install, ensuring that no matter what type of vehicle you drive, you can benefit from the enhanced visibility and safety they provide. The universal compatibility takes the guesswork out of selecting the right lights for your car, making them a popular choice for drivers who prioritize functionality and convenience.

Constructed with durability in mind, these lights boast an impressive lifespan of 50,000 hours, which means they are built to last. This longevity ensures that once installed, drivers can rely on their consistent performance for years to come, without the frequent replacements associated with conventional bulbs. The extended lifespan not only provides peace of mind but also translates to cost savings over time, as the need for regular maintenance and bulb changes is greatly reduced.

The lamp type utilized in these LED Brake Turn Signal Lights is the industry-standard 1156, a model known for its easy plug-and-play installation and wide compatibility. This lamp type has been chosen for its reliability and the ease with which it integrates into existing light sockets, making the upgrade from standard bulbs to LED an effortless process. Vehicle owners can thus enjoy the benefits of LED lighting without the need for complex modifications to their car's electrical system.

When it comes to type, these lights are pure LED, ensuring that every component of the light's functionality, from the brake to the turn signal, utilizes the efficiency and brightness of LED technology. This ensures a cohesive and uniform light output, which is crucial for clear signaling. The LED elements are encased in robust housings that protect them from the elements, ensuring that they continue to function optimally in a variety of weather conditions, from the heat of summer to the cold and moisture of winter.

In summary, the LED Brake Turn Signal Lights are an essential upgrade for any vehicle owner looking for a combination of high performance, long-lasting durability, and universal compatibility. These lights not only provide a clear indication of stopping and turning actions but also contribute to the overall aesthetics of your vehicle, thanks to their modern LED design. With an impressive lifespan, easy installation, and superb functionality, these LED lights are an investment in both your vehicle's performance and your safety on the road.

### Features:

Product Name: LED Brake Turn Signal Lights

Function: Brake, Turn Signal

Wattage: 6W/Bulb

Type: LED

Oe No: 1157/7443/3157

Car Fitment: Accurate Cycle Engineering, Alouette

Also known as LED Brake and Turn Warning Lights

Can be used as LED Rear Brake and Turn Lights

Designed as an LED Brake and Taillight Combo

### Technical Parameters:

Parameter	Specification
Function	Brake, Turn Signal
Oe No	1157/7443/3157
Lamp Type	1156
Wattage	6W/Bulb
Installation	Easy
Waterproof	Yes
Voltage	12V
Warranty	1 Year
Power	6W
Car Model	Universal





**AUTOMOTIVE-  
GRADE  
PRECISION MATERIALS**

**Ours ✓  
LED Light Bulb**

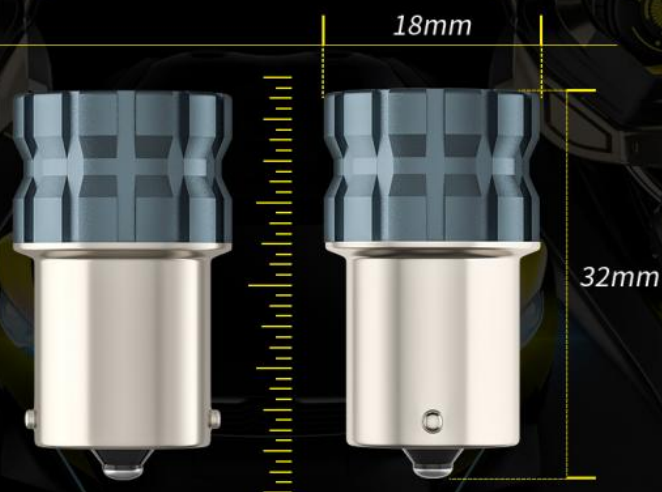
**Others ✗  
LED Light Bulb**





# 1:1 REPLACEMENT

Lightweight design, plug&play easy installation.



More precise and more suitable

## CAR LED LIGHT BULB

Suitable for Back Up Lights, Brake Lights, Turn Signal Bulbs, Parking Lights, etc.

**3600**  
LM

High  
Lumen

**50000**  
hours

Longer  
Life

**18W**

Super  
Lights

**3030**

+300%  
Brighter





18mm

32mm

1157

18mm

32mm

1156

18mm

34mm

T20

18mm

38mm

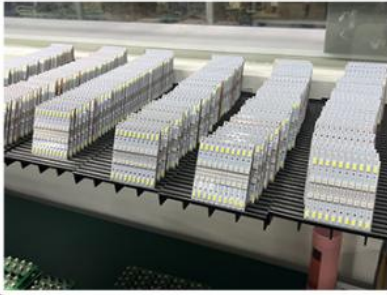
T25

**5D LED**  
LIGHT BULB

**300%**  
BRIGHTER

**COMPATIBLE** | **LONGER LIFE**  
Prevent flickering | Better quality assurance

# COMPANY PROFILE





# EXHIBITION SHOW



## The China Import and Export Fair



## The China Import and Export Fair



# CERTIFICATE



<b>Customized OEM</b>	<b>Free sample</b>
<b>Fast Shipping</b>	<b>Fast Shipping</b>
<b>Best Service</b>	<b>Good Review</b>
<b>Testing instruments</b>	<b>Warranty available</b>

## Applications:

The Dalilah 1156/1157 LED Brake Turn Signal Lights are a versatile and essential upgrade for any vehicle, designed to provide superior visibility and safety on the road. These lights, originating from China, bear the OE numbers 1157/7443/3157, indicating their compatibility with a wide range of car models. Their 1156 lamp type, coupled with a full 360-degree lighting angle, ensures an all-around illumination that significantly improves the signaling of the vehicle's intentions to other road users.

One of the primary applications of the Dalilah LED Brake and Taillight Combo is for use as a direct replacement for standard brake lights and taillights. The bright and crisp light emitted by these LEDs is instantaneous, offering quicker signaling compared to traditional incandescent bulbs. This quick response time can be the difference between a safe stop and a potential collision, making these lights an invaluable addition to any safety-conscious driver's vehicle.

Another scenario where the Dalilah LED Brake Turn Indicators can be particularly beneficial is during inclement weather. The high brightness and superior visibility of these lights cut through fog, rain, and snow, ensuring that other drivers can clearly see the vehicle's turning and braking actions. This feature is especially important in conditions where visibility is compromised, reducing the possibility of accidents and enhancing overall road safety.

Installation of the Dalilah LED Brake and Turn Warning Lights is designed to be easy, allowing vehicle owners to upgrade their lights without the need for professional help. The straightforward plug-and-play installation means that these lights can be quickly and efficiently installed, getting drivers back on the road with improved safety in no time. Operating at a standard 12V voltage, these LED lights are not only energy-efficient but also compatible with the electrical systems of most vehicles.

Whether for daily commuting, long-distance travel, or simply to ensure a higher level of safety, the Dalilah LED Brake Turn Signal Lights

serve as an essential enhancement for any vehicle. Their reliable performance, ease of installation, and broad compatibility make them a top choice for drivers looking to improve their vehicle's signaling capabilities and overall safety on the road.

### Packing and Shipping:

#### Product Packaging:

The LED Brake Turn Signal Lights are carefully packed in a sturdy, protective box to ensure they reach you in perfect condition. Each light is encased in a bubble wrap sleeve and the box is filled with packing peanuts to prevent any movement during transit. Clear labeling on the outside of the package indicates the contents as fragile, ensuring handlers know to treat your lights with care.

#### Shipping:

Once your order is confirmed, the LED Brake Turn Signal Lights will be dispatched within 1-2 business days. We utilize reliable shipping carriers to ensure timely delivery. You will receive a tracking number via email, enabling you to monitor your package's journey to your doorstep. Please note that our standard shipping option does not include insurance; however, we offer additional shipping options including expedited delivery and insured shipping at an extra cost.

### FAQ:

#### Q1: What vehicles are compatible with the Dalilah LED Brake Turn Signal Lights?

**A1:** The Dalilah LED Brake Turn Signal Lights with model numbers 1156/1157 are designed to fit a wide range of vehicles. However, it's important to check your vehicle's owner's manual or contact the manufacturer to confirm compatibility with your specific make and model.

#### Q2: Can the Dalilah LED lights be used for both brake and turn signals?

**A2:** Yes, the Dalilah LED lights are designed to function as both brake lights and turn signal lights, offering multi-functionality and improved visibility for your vehicle.

#### Q3: Are the Dalilah LED Brake Turn Signal Lights easy to install?

**A3:** The Dalilah LED lights are designed for easy installation, and they typically plug into your vehicle's existing light sockets without the need for additional wiring. However, installation can vary by vehicle, so it's recommended to follow the specific instructions provided or seek professional assistance if necessary.

#### Q4: How long do the Dalilah LED Brake Turn Signal Lights typically last?

**A4:** LED lights are known for their longevity. While the exact lifespan can vary based on usage and driving conditions, Dalilah LED lights are built to last and offer extended life over traditional incandescent bulbs.

#### Q5: Are these LED lights legal for street use?

**A5:** The Dalilah LED Brake Turn Signal Lights are designed to meet industry standards and are generally street legal. However, regulations can vary by location, so it's advisable to check with local laws and regulations to ensure compliance in your area.

**HAOHI** HAOHI CO., LTD



15813693852



hedva511@163.com



automotive-ledlight.com

Room 803, Chevalier House, 45-51 Chatham Road South, Tsim Sha Tsui, Kowloon, Hong Kong.